

# SOLTAIRE LOW HEADROOM

# HENDERSON

120kg

180kg

250kg

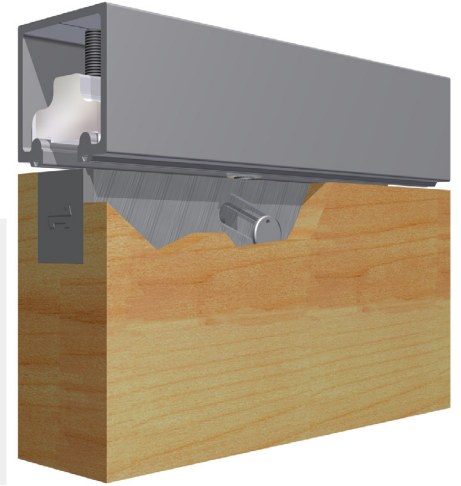
Wood

Interior

For wooden sliding doors weighing up to 120kg, 180kg or 250kg with all parts concealed

## Overview

Soltaire Low Headroom is ideal for top hung sliding door systems with low or restricted headroom. The system is designed to accommodate interior and exterior wooden doors of one sliding panel or two biparting doors on a single track. Catering for doors weighing up to 120kg, 180kg or 250kg, the kit is designed to reduce the clearance between the track and top of the door to 2mm - making the hardware barely visible.



## Features and Benefits

- Designed to create a modern minimalist finish with all parts concealed
- Can reduce the clearance between the track and the top of the door to 2mm
- Vertically adjustable sliding door kit for low or restricted headroom applications
- Easily adjusted when installed
- Engineered for easy installation

## Product and Door Specification

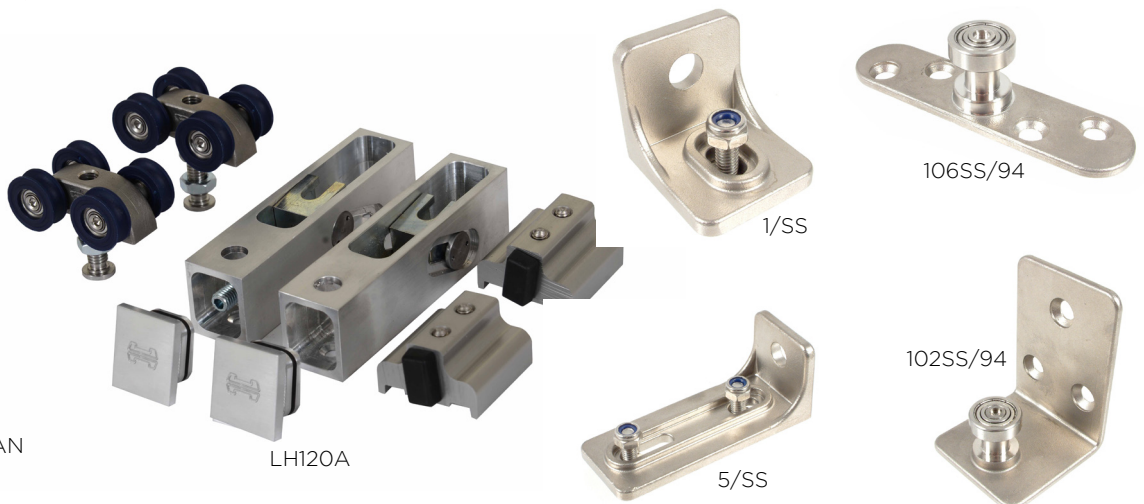
Kit Short Code	Max. Door Width	Door Thickness Range	Max. Door Weight
LH120A	3000mm	35 - 48mm	120kg
LH180A	3300mm	35 - 48mm	180kg
LH250A	3300mm	35 - 48mm	250kg

## Track, Guide Channel and Bracket Specification - must be purchased in addition to kit

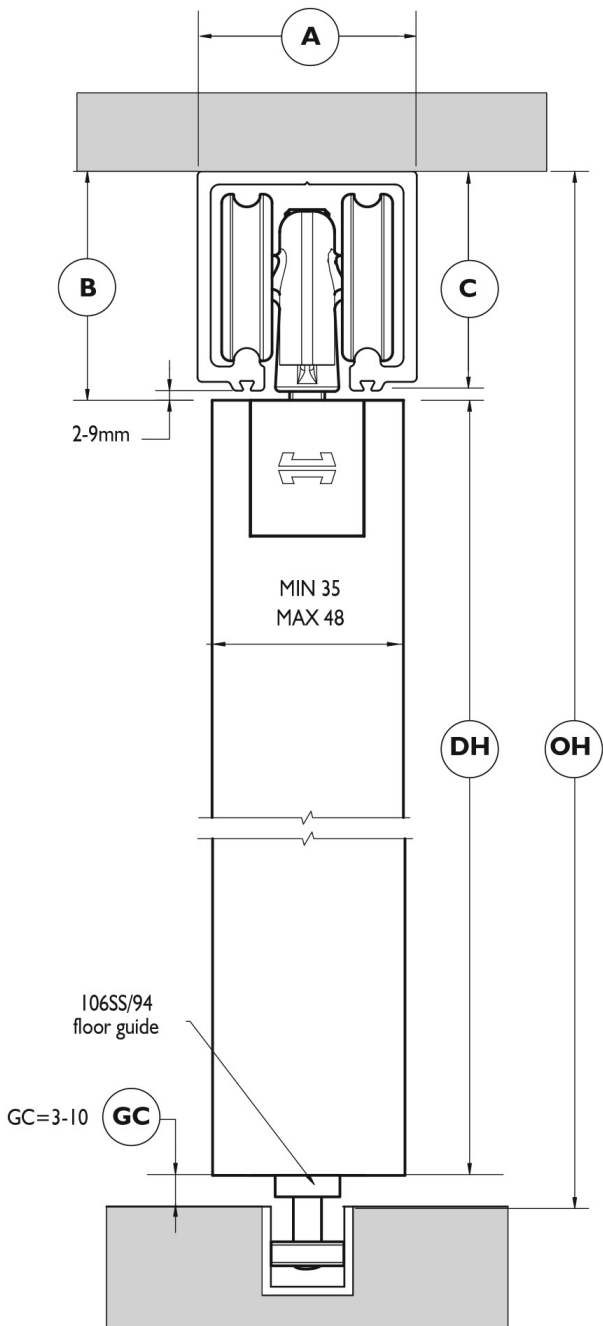
Component	Short Code	Description
Track	120/****	Anodised aluminium track, for doors weighing up to 120kg available in 2000, 2500, 3000, 4000, 5000 and 6000mm lengths
	180/****	Anodised aluminium track, for doors weighing up to 180kg available in 2000, 2500, 3000, 4000, 5000 and 6000mm lengths
	250/****	Anodised aluminium track, for doors weighing up to 250kg available in 2000, 2500, 3000, 4000, 5000 and 6000mm lengths
Channel	94X/****	Aluminium channel available in 2000, 2500, 3000, 4000, 5000 and 6000mm lengths
Guides	106SS/94	Concealed guide for doors weighing up to 120kg
	106HSS/94	Concealed guide for doors weighing up to 180kg and 250kg
	102SS/94	Wall mounted guide for doors weighing up to 180kg and 250kg
Brackets <small>For face fixed only. Soffit fix spacing = 900mm centres max</small>	1/SS	Stainless steel single run face fixed bracket
	5/SS	Stainless steel double run face fixed bracket for doors weighing up to 120kg
	5H/SS	Stainless steel double run face fixed bracket for doors weighing up to 180kg and 250kg

## Kit Contents

- Channel bodies (x 2)
- End Cap (x 2)
- Strap Bolt (x 2)
- Hanger (x 2)
- Track Stop (x 2)
- 4mm Allen Key (x 1)
- Screw Pack (x 1)



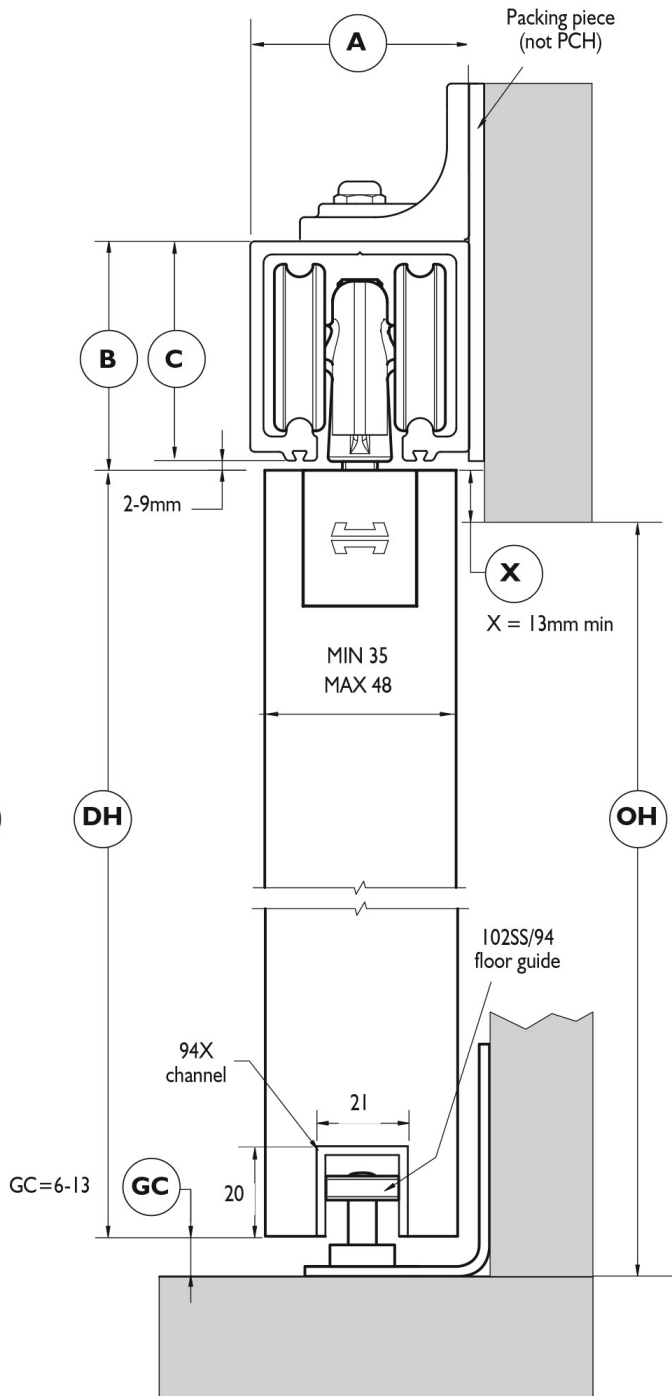
### Soffit Fix



$$DH = OH - (B + GC^*)$$

\*GC inserted to match floor guide selected

### Face Fix



$$DH = OH + (X - GC^*)$$

\*GC inserted to match floor guide selected

### Key

Kit	A	B	C
LH120A	41mm	33mm (min.) - 40mm (max.)	31mm
LH180A	47mm	47mm (min.) - 54mm (max.)	45mm
LH250A	50mm	52mm (min.) - 59mm (max.)	50mm

**For further information, please contact us on:**

**UK Sales**

T: +44 (0) 191 377 7345

E: [sales@pchenderson.com](mailto:sales@pchenderson.com)

W: [www.pchenderson.com](http://www.pchenderson.com)

**Export Sales**

T: +44 (0) 191 377 7346

E: [international@pchenderson.com](mailto:international@pchenderson.com)

W: [export.pchenderson.com](http://export.pchenderson.com)